

Austin Park at Nocatee Phase One

A PART OF SECTIONS 1 AND 2, TOWNSHIP 5 SOUTH, RANGE 28 EAST, ST. JOHNS COUNTY, FLORIDA

GRAPHIC SCALE



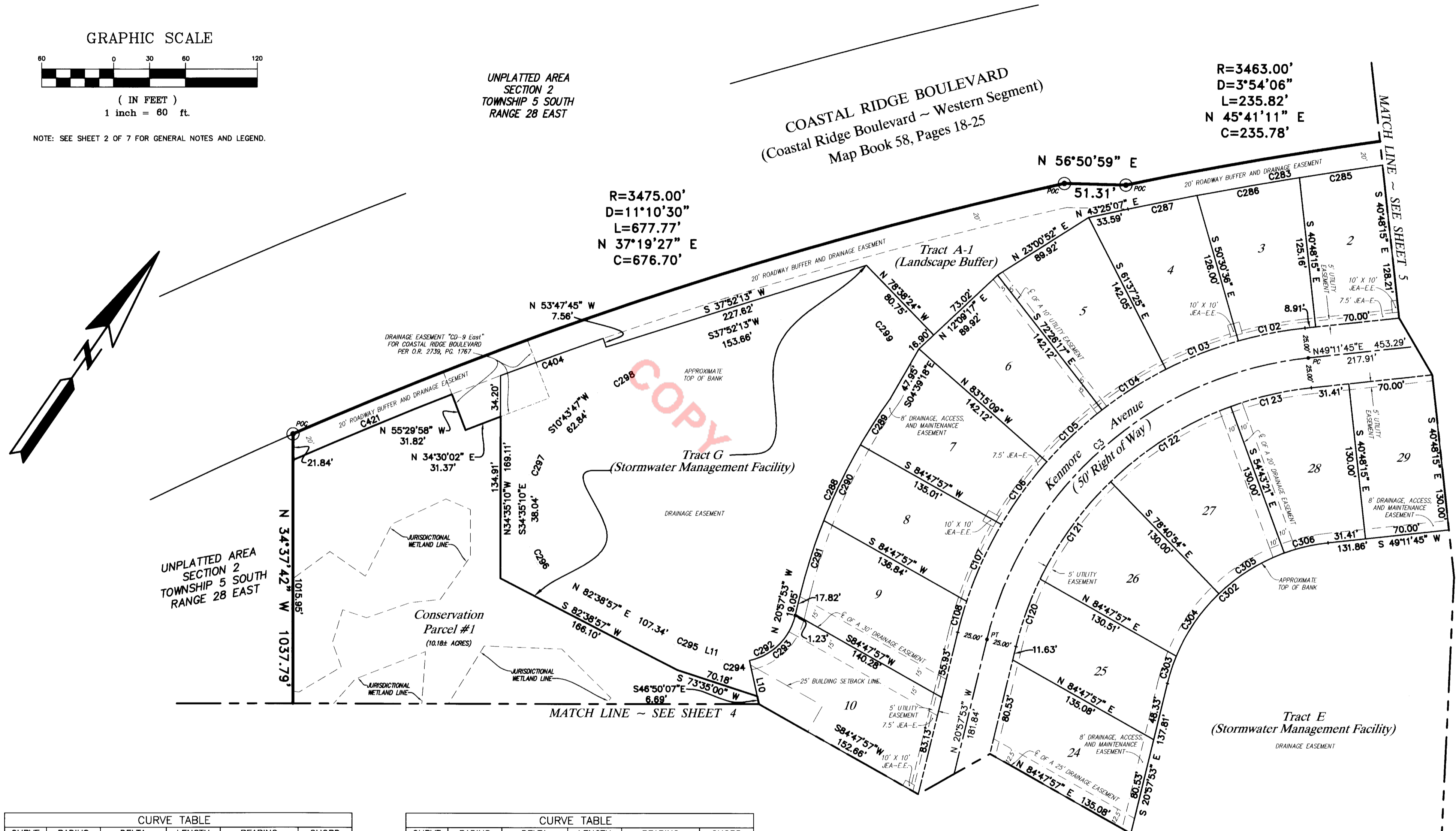
(IN FEET)
1 inch = 60 ft.

NOTE: SEE SHEET 2 OF 7 FOR GENERAL NOTES AND LEGEND.

UNPLATTED AREA
SECTION 2
TOWNSHIP 5 SOUTH
RANGE 28 EAST

R=3475.00'
D=11°10'30"
L=677.77'
N 37°19'27" E
C=676.70'

R=3463.00'
D=3°54'06"
L=235.82'
N 45°41'11" E
C=235.78'



CURVE	RADIUS	DELTA	LENGTH	BEARING	CHORD
C3	310.00'	70°09'38"	379.61'	S14°06'56"W	356.33'
C102	335.00'	9°42'22"	56.75'	S44°20'34"W	56.68'
C103	335.00'	11°06'48"	64.98'	S33°55'59"W	64.88'
C104	335.00'	10°48'52"	63.23'	S22°58'09"W	63.14'
C105	335.00'	10°48'52"	63.23'	S12°09'17"W	63.14'
C106	335.00'	11°03'56"	64.70'	S01°12'54"W	64.60'
C107	335.00'	12°02'34"	70.41'	S10°20'21"E	70.28'
C108	335.00'	4°36'15"	26.92'	S18°39'45"E	26.91'
C120	285.00'	12°01'05"	59.78'	S14°57'20"E	59.67'
C121	285.00'	20°15'54"	100.80'	S01°11'09"W	100.28'
C122	285.00'	23°57'33"	119.18'	S23°17'53"W	118.31'
C123	285.00'	13°55'06"	69.23'	S42°14'12"W	69.06'
C283	3443.00'	4°24'55"	265.33'	S45°54'18"W	265.26'
C285	3443.00'	1°09'58"	70.07'	S46°42'04"W	70.07'
C286	3443.00'	1°26'42"	86.83'	S45°23'45"W	86.83'
C287	3443.00'	0°58'33"	58.64'	S44°11'07"W	58.64'
C288	470.00'	21°58'23"	180.25'	S09°58'41"E	179.14'
C289	470.00'	5°34'48"	45.77'	S01°46'54"E	45.75'

CURVE	RADIUS	DELTA	LENGTH	BEARING	CHORD
C290	470.00'	8°33'31"	70.21'	S08°51'03"E	70.14'
C291	470.00'	7°50'04"	64.27'	S17°02'51"E	64.22'
C292	50.00'	91°26'00"	79.79'	N24°45'07"E	71.59'
C293	50.00'	64°07'45"	55.96'	N11°06'00"E	53.09'
C294	50.00'	27°18'15"	23.83'	N56°49'00"E	23.60'
C295	100.00'	12°10'50"	21.26'	N76°33'32"E	21.22'
C296	50.00'	62°45'53"	54.77'	S65°58'06"E	52.07'
C297	50.00'	45°18'57"	39.55'	S11°55'42"E	38.52'
C298	100.00'	27°08'27"	47.37'	S24°18'00"W	46.93'
C299	50.00'	143°08'17"	124.91'	N70°33'38"W	94.87'
C302	155.00'	70°09'38"	189.80'	S14°06'56"W	178.16'
C303	155.00'	8°51'54"	23.98'	S16°31'56"W	23.96'
C304	155.00'	23°25'05"	63.35'	S00°23'26"E	62.91'
C305	155.00'	23°57'33"	64.82'	S23°17'53"W	64.34'
C306	155.00'	13°55'06"	37.65'	S42°14'12"W	37.56'
C404	3455.00'	1°30'31"	90.97'	S35°26'59"W	90.97'
C421	3455.00'	2°22'53"	143.61'	S32°46'55"W	143.60'

LINE	BEARING	DISTANCE
L10	S 46°50'07" E	37.28'
L11	N 70°28'07" E	19.60'

PREPARED BY:
ROBERT M. ANGAS ASSOCIATES, INC.
14775 ST. AUGUSTINE ROAD
JACKSONVILLE, FL 32258 (904) 642-8550
CERTIFICATE OF AUTHORIZATION NO. LB 3624