

Austin Park at Nocatee Phase One

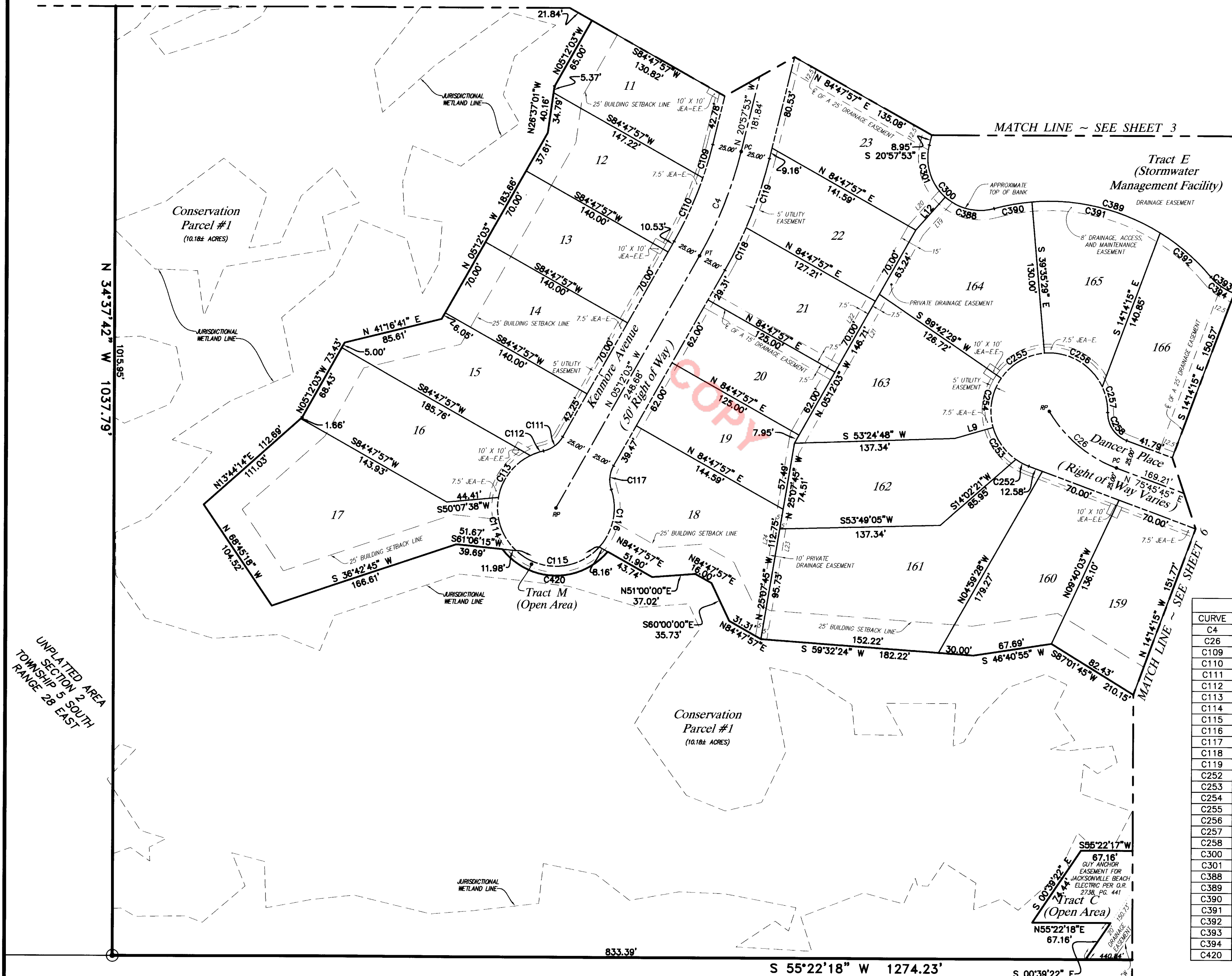
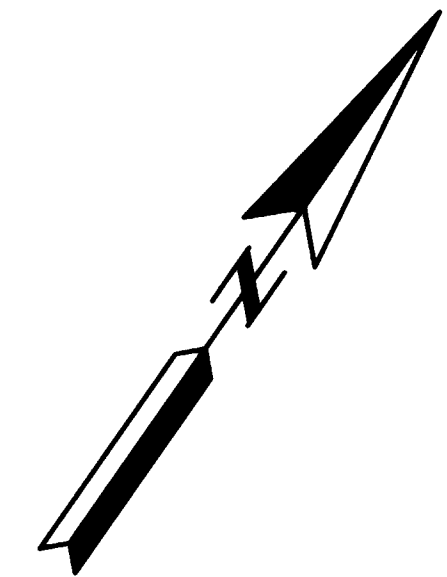
A PART OF SECTIONS 1 AND 2, TOWNSHIP 5 SOUTH, RANGE 28 EAST, ST. JOHNS COUNTY, FLORIDA

GRAPHIC SCALE



(IN FEET)
1 inch = 60 ft.

NOTE: SEE SHEET 2 OF 7 FOR GENERAL NOTES AND LEGEND.



LINE	BEARING	DISTANCE
L9	S 39°12'23" W	34.07'
L12	N 06°52'29" E	37.94'
L19	N 06°52'29" E	37.78'
L20	N 06°52'29" E	39.37'
L21	N 05°12'03" W	215.18'
L22	N 05°12'03" W	204.73'
L23	N 25°07'45" W	161.56'
L24	N 25°07'45" W	176.64'

CURVE	RADIUS	DELTA	LENGTH	BEARING	CHORD
C4	350.00'	15°45'49"	96.29'	N13°04'58"W	95.99'
C26	112.50'	38°56'33"	76.46'	S84°45'59"E	75.00'
C109	325.00'	5°13'12"	29.61'	N18°21'17"W	29.60'
C110	325.00'	10°32'37"	59.81'	N10°28'22"W	59.72'
C111	25.00'	48°11'23"	21.03'	N18°53'38"E	20.41'
C112	50.00'	13°55'20"	12.15'	S36°01'40"W	12.12'
C113	50.00'	53°38'24"	46.81'	S02°14'48"W	45.12'
C114	50.00'	57°22'42"	50.07'	S53°15'45"E	48.01'
C115	50.00'	90°58'37"	79.39'	N52°33'36"E	71.31'
C116	50.00'	60°27'44"	52.76'	N23°09'34"W	50.35'
C117	25.00'	48°11'23"	21.03'	S29°17'45"E	20.41'
C118	375.00'	6°13'45"	40.77'	N08°18'56"W	40.75'
C119	375.00'	9°32'05"	62.40'	N16°11'50"W	62.33'
C252	50.00'	14°19'26"	12.50'	N82°55'28"E	12.47'
C253	50.00'	39°07'12"	34.14'	S70°21'13"E	33.48'
C254	50.00'	50°30'06"	44.07'	S25°32'34"E	42.66'
C255	50.00'	50°42'01"	44.24'	S25°03'30"W	42.81'
C256	50.00'	69°46'31"	60.89'	S85°17'46"W	57.20'
C257	50.00'	26°06'27"	22.78'	N46°45'45"W	22.59'
C258	25.00'	70°31'44"	30.77'	S68°58'23"E	28.87'
C300	45.00'	119°06'02"	93.54'	S80°30'53"E	77.59'
C301	45.00'	62°09'38"	48.82'	S52°02'42"E	46.46'
C388	45.00'	56°56'24"	44.72'	N68°24'17"E	42.90'
C389	180.00'	65°28'13"	205.68'	S72°40'12"W	194.67'
C390	180.00'	10°28'25"	32.90'	S45°10'18"W	32.86'
C391	180.00'	36°33'54"	114.87'	S68°41'28"W	112.93'
C392	180.00'	18°25'54"	57.90'	N83°48'38"W	57.66'
C393	45.00'	149°09'55"	117.15'	N30°49'21"E	86.76'
C394	45.00'	31°11'18"	24.50'	N89°48'40"E	24.19'
C420	58.00'	102°11'48"	103.45'	N56°27'22"E	90.27'

PALM VALLEY ROAD COUNTY ROAD NO. 210
(100' Right of Way)

PREPARED BY:
ROBERT M. ANGAS ASSOCIATES, INC.
14775 ST. AUGUSTINE ROAD
JACKSONVILLE, FL 32258 (904) 642-8550
CERTIFICATE OF AUTHORIZATION NO. LB 3624