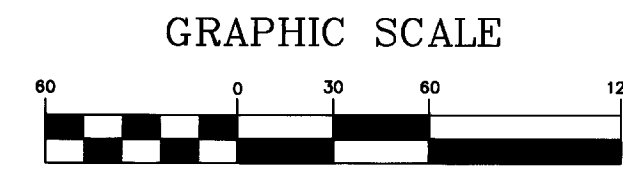


Austin Park at Nocatee Phase One

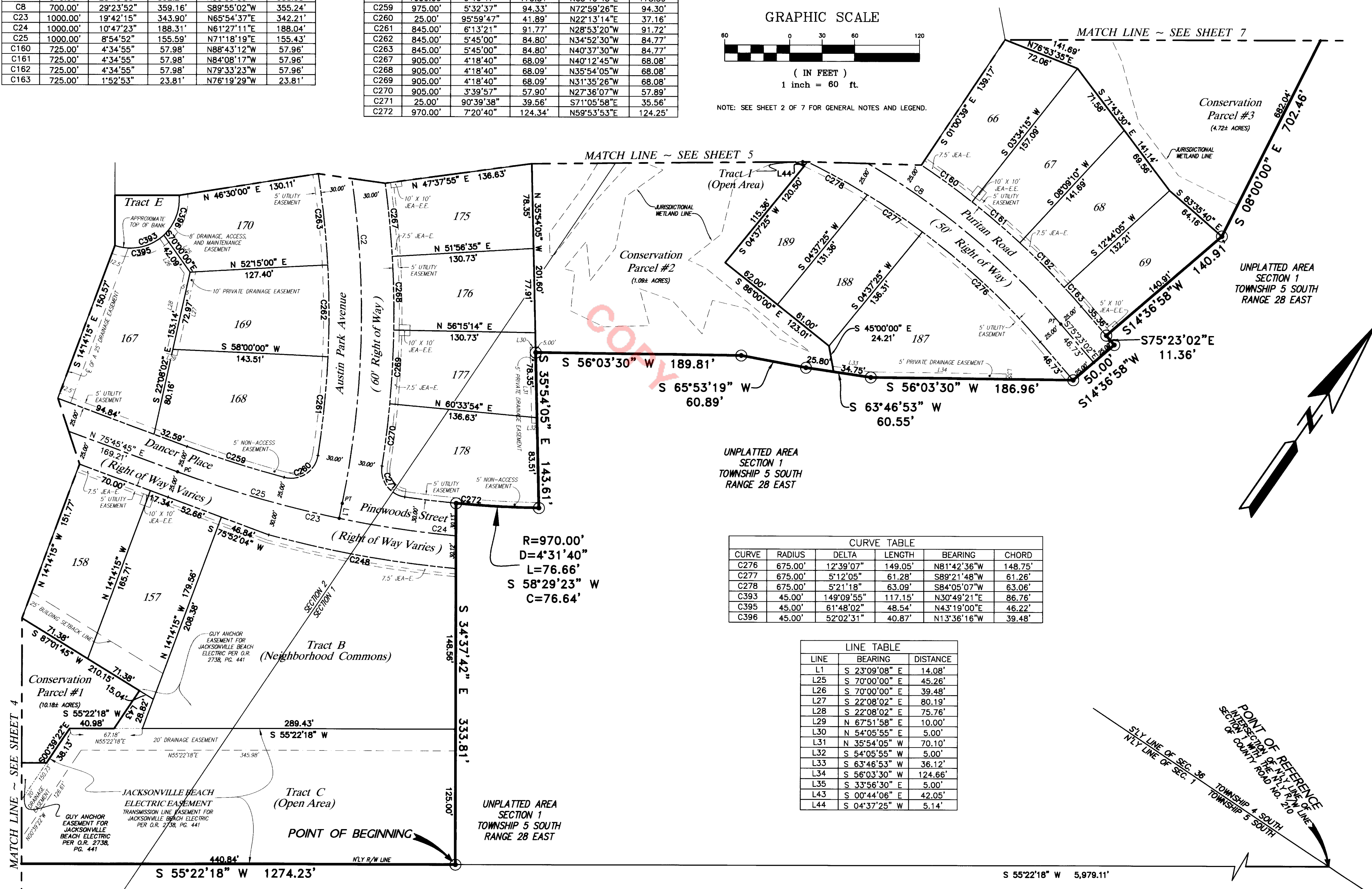
A PART OF SECTIONS 1 AND 2, TOWNSHIP 5 SOUTH, RANGE 28 EAST, ST. JOHNS COUNTY, FLORIDA

CURVE	RADIUS	DELTA	LENGTH	BEARING	CHORD
C2	875.00'	25°40'55"	392.21'	N35°59'35"W	388.93'
CB	700.00'	29°23'52"	359.16'	S89°55'02"W	355.24'
C23	1000.00'	19°42'15"	343.90'	N65°54'37"E	342.21'
C24	1000.00'	10°47'23"	188.31'	N61°27'11"E	188.04'
C25	1000.00'	8°54'52"	155.59'	N71°18'19"E	155.43'
C160	725.00'	4°34'55"	57.98'	N88°43'12"W	57.96'
C161	725.00'	4°34'55"	57.98'	N84°08'17"W	57.96'
C162	725.00'	4°34'55"	57.98'	N79°33'23"W	57.96'
C163	725.00'	1°52'53"	23.81'	N76°19'29"W	23.81'

CURVE	RADIUS	DELTA	LENGTH	BEARING	CHORD
C248	1030.00'	9°46'47"	175.81'	N65°19'45"E	175.59'
C259	975.00'	5°32'37"	94.33'	N72°59'26"E	94.30'
C260	25.00'	95°59'47"	41.89'	N22°13'14"E	37.16'
C261	845.00'	6°13'21"	91.77'	N28°53'20"W	91.72'
C262	845.00'	5°45'00"	84.80'	N34°52'30"W	84.77'
C263	845.00'	5°45'00"	84.80'	N40°37'30"W	84.77'
C267	905.00'	4°18'40"	68.09'	N40°12'45"W	68.08'
C268	905.00'	4°18'40"	68.09'	N35°54'05"W	68.08'
C269	905.00'	4°18'40"	68.09'	N31°35'26"W	68.08'
C270	905.00'	3°39'57"	57.90'	N27°36'07"W	57.89'
C271	25.00'	90°39'38"	39.56'	S71°05'58"E	35.56'
C272	970.00'	7°20'40"	124.34'	N59°53'53"E	124.25'



NOTE: SEE SHEET 2 OF 7 FOR GENERAL NOTES AND LEGEND.



R=970.00'
D=4°31'40"
L=76.66'
S 58°29'23" W
C=76.64'

CURVE	RADIUS	DELTA	LENGTH	BEARING	CHORD
C276	675.00'	12°39'07"	149.05'	N81°42'36"W	148.75'
C277	675.00'	5°12'05"	61.28'	S89°21'48"W	61.26'
C278	675.00'	5°21'18"	63.09'	S84°05'07"W	63.06'
C393	45.00'	149°09'55"	117.15'	N30°49'21"E	86.76'
C395	45.00'	61°48'02"	48.54'	N43°19'00"E	46.22'
C396	45.00'	52°02'31"	40.87'	N13°36'16"W	39.48'

LINE	BEARING	DISTANCE
L1	S 23°09'08" E	14.08'
L25	S 70°00'00" E	45.26'
L26	S 70°00'00" E	39.48'
L27	S 22°08'02" E	80.19'
L28	S 22°08'02" E	75.76'
L29	N 67°51'58" E	10.00'
L30	N 54°05'55" E	5.00'
L31	N 35°54'05" W	70.10'
L32	S 54°05'55" W	5.00'
L33	S 63°46'53" W	36.12'
L34	S 56°03'30" W	124.66'
L35	S 33°56'30" E	5.00'
L43	S 00°44'06" E	42.05'
L44	S 04°37'25" W	5.14'

PALM VALLEY ROAD COUNTY ROAD NO. 210
(100' Right of Way)

PREPARED BY:
ROBERT M. ANGAS ASSOCIATES, INC.
14775 ST. AUGUSTINE ROAD
JACKSONVILLE, FL 32258 (904) 642-8550
CERTIFICATE OF AUTHORIZATION NO. LB 3624