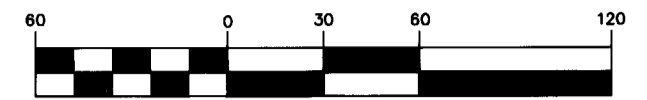


Austin Park at Nocatee Phase One

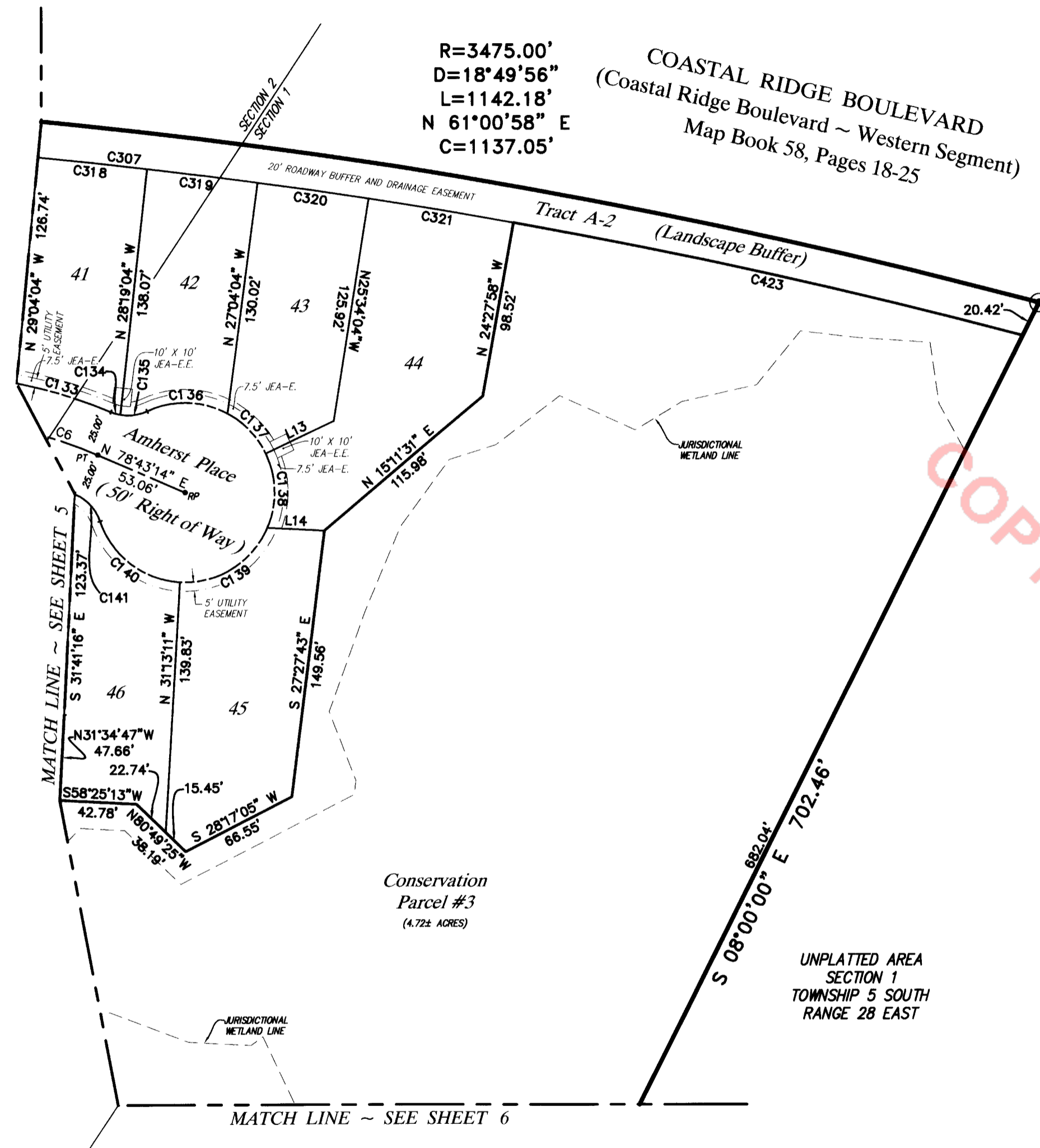
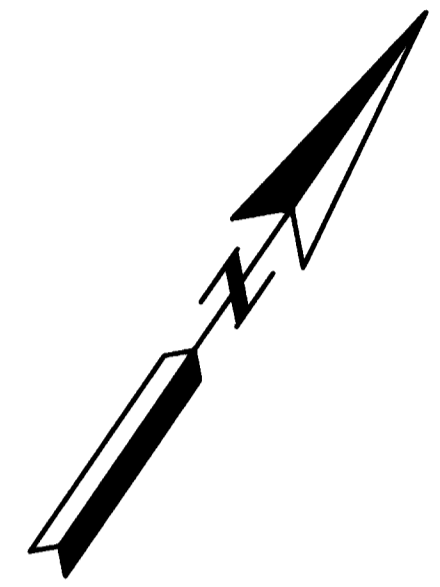
A PART OF SECTIONS 1 AND 2, TOWNSHIP 5 SOUTH, RANGE 28 EAST, ST. JOHNS COUNTY, FLORIDA

GRAPHIC SCALE



(IN FEET)
1 inch = 60 ft.

NOTE: SEE SHEET 2 OF 7 FOR GENERAL NOTES AND LEGEND.



COPY

LINE TABLE		
LINE	BEARING	DISTANCE
L13	N 29°58'43" E	42.01'
L14	N 58°25'13" E	31.91'

CURVE TABLE					
CURVE	RADIUS	DELTA	LENGTH	BEARING	CHORD
C6	250.00'	20°18'01"	88.58'	S68°34'13"W	88.11'
C133	275.00'	11°31'23"	55.31'	S72°24'47"W	55.21'
C134	25.00'	12°40'22"	5.53'	N71°50'18"E	5.52'
C135	25.00'	34°59'06"	15.27'	N48°00'34"E	15.03'
C136	50.00'	53°21'17"	46.56'	S57°11'39"W	44.90'
C137	50.00'	36°06'24"	31.51'	N78°04'30"W	30.99'
C138	50.00'	48°43'29"	42.52'	N35°39'33"W	41.25'
C139	50.00'	70°04'38"	61.15'	N23°44'31"E	57.41'
C140	50.00'	68°06'34"	59.44'	S87°09'54"E	56.00'
C141	25.00'	48°58'46"	21.37'	N77°36'00"W	20.73'
C307	3455.00'	19°14'07"	1159.91'	S60°44'48"W	1154.47'
C318	3455.00'	1°01'02"	61.34'	S61°35'46"W	61.34'
C319	3455.00'	1°01'54"	62.21'	S62°37'14"W	62.21'
C320	3455.00'	1°02'20"	62.64'	S63°39'21"W	62.64'
C321	3455.00'	1°21'32"	81.94'	S64°51'16"W	81.94'
C423	3455.00'	4°49'50"	291.29'	S67°56'57"W	291.20'

PREPARED BY:
ROBERT M. ANGAS ASSOCIATES, INC.
 14775 ST. AUGUSTINE ROAD
 JACKSONVILLE, FL 32258 (904) 642-8550
 CERTIFICATE OF AUTHORIZATION NO. LB 3624